



MESSINA AT WENTWORTH POINT (FORMERLY HOMEBUSH BAY)

Developer Sekisui House Australia
Sales office The Piazza, 21 Bennelong Parkway, Wentworth Point
Open Daily 10am-4pm
Price One-bedroom from \$400,000; two-bedroom from \$550,000
Phone 1800 333 818

THEWATERFRONT.COM.AU

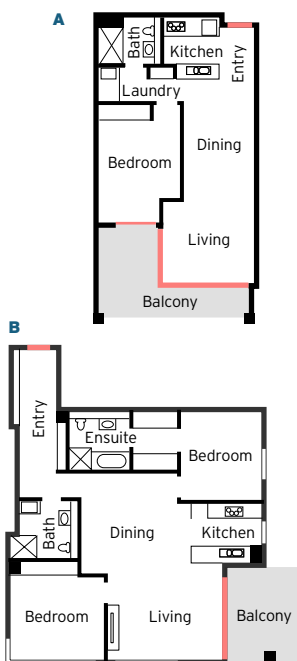
FEATURES

Spacious balconies, security parking, tiled entries, recessed lighting, high-grade carpets, built-in robes, quality kitchens and bathrooms, access to resort-style sporting facilities, shops, restaurants, services and landscaping

SAMPLE FLOORPLANS

A ONE-BEDROOM

Estimated strata area = 67sq m

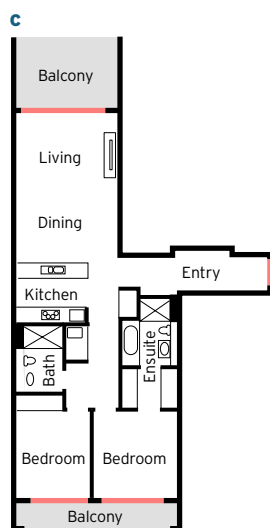


B TWO-BEDROOM

Estimated strata area = 102sq m

C TWO-BEDROOM ALTERNATIVE LAYOUT

Estimated strata area = 102sq m



An artist's impression of the pool at The Waterfront

Perks of paradise

Enjoy first-class facilities and a high level of luxury in the Messina development

There will be no need for residents of this unique new development at Wentworth Point to venture far from their front door in search of a relaxing, resort-style environment.

The Messina, part of The Waterfront on the western shore of Homebush Bay, will comprise 162 apartments in two separate buildings, overlooking a sandy beach and its sun lounges, manicured grass and gazebos. The Waterfront contains 16 apartment buildings designed with a European-style village theme, complete with cobblestone walkways and a central piazza.

Residents enjoy facilities such as swimming pools, a gym, two tennis courts, a day spa, function centre, library, four restaurants, a medical centre, delicatessen, bakery and convenience store.

Developed by Payce, the rights for The Waterfront were recently sold to Sekisui House, Japan's largest home builder.

The Waterfront marketing manager Moonmoon Sahu says the development has appealed to people of all ages,

cultures and interests, with the residents enjoying a friendly atmosphere.

"It has attracted people who like the idea of living close to the water, parkland and entertainment facilities, and being able to walk to the Olympic Park sporting complex," she says.

Messina is a pet-friendly development that will have an eight-level northern building and a six-storey southern building, with one-bedroom apartments starting about \$400,000 and two-bedroom apartments from about \$550,000.

Living areas and bedrooms have been

arranged to allow both solar access and privacy, while flowing on to terrace areas, creating a link with the outdoors.

Tiled entries and high-grade carpets will feature, while kitchens include stone benchtops, Omega appliances and polyurethane cupboards. Vanities with stone bench tops, recessed basins and a semi-framed shower screen feature in bathrooms and ensuites.

Public transport to the area includes ferries, buses, and trains from nearby Olympic Park station and Strathfield station.

Jennifer Veerhuis



An example of what the living areas will look like

Bronwyn Evans and her cat Baz outside her townhouse at Wentworth Point



NEW FRIENDS ARE PART OF THIS APARTMENT PACKAGE

Bronwyn Evans and her husband Peter Baartz knew they'd found their future home as soon as they saw The Waterfront development at Wentworth Point. The couple were so impressed they bought a three-bedroom apartment immediately.

"We'd had a look from Breakfast Point to here and a number of suburbs along the way," Bronwyn says. "And when we walked into the place, we bought straight away."

"We liked it so much we bought an investment property here as well."

They moved into their townhouse apartment in the Valencia at The Waterfront in April 2008 and couldn't be happier with their views across Homebush Bay and the strong sense of community among fellow residents.

"I was living at Lindfield for 16 years and knew maybe four people socially and here we have easily 100 people we know. We've made plenty of new friends and it's just fabulous," Bronwyn says.

Meeting people has proven easy, with residents organising drinks and a barbecue each week in the piazza while a band plays once a month on Sundays.

"People bring along their picnic lunch and a band plays," Bronwyn says. "We do most of our socialising here now and our friends who live elsewhere come here too."

Bronwyn says using facilities such as pools and landscaped gardens without worrying about maintenance has been great, and she describes the sunrises across Homebush Bay as spectacular.